

For the 16-th International Symposium "Compressor Users-Manufacturers," St-Petersburg, Russia, June, 8-10-th, 2011

Transforming Waste Heat to Power through Development of a CO₂ - Based Power Cycle

Michael Persichilli, Timothy Held, Stephen Hostler, Edward Zdankiewicz

Echogen Power Systems LLC
365 Water Street
Akron, OH 44311 U.S.A.
www.echogen.com

Abstract

With global demand for energy expected to increase 60% by 2030, concerns about energy affordability, security, and greenhouse gas (GHG) emissions have heightened interest in energy efficiency and grid demand reduction. Across the globe, legislators are striving to regulate GHG emissions through market-based mechanisms, efficiency programs, demand reduction, and economic incentives. Most of the world's electrical power is generated by heat engines that convert heat from fuel combustion into mechanical energy which is then converted into electricity. In the United States (U.S.) for example, it is estimated that 280,000 MW discharged annually as *waste heat* could be recycled to provide 20% of U.S. electricity needs while reducing GHG by 20% and saving USD \$70-150 billion per year on energy costs. Various sources of independent data suggest that this waste heat recovery opportunity is valued at over USD \$600 billion. Similarly, large opportunities exist worldwide and in Russia in particular.

In response to this opportunity, Echogen Power Systems (Akron, Ohio, USA), in partnership with Dresser-Rand (Houston, Texas, USA – Paris, France) is developing power generation technologies that transform heat from waste and renewable energy sources into electricity and process heat. The thermal engine technology is based on a waste heat to power cycle using a supercritical carbon dioxide (CO₂) working fluid in a closed loop. Supercritical carbon dioxide is environmentally benign, non-toxic, with favorable heat and mass transport properties that make it energy dense. Compared to organic and steam-based waste heat recovery systems, supercritical CO₂ can achieve high efficiencies over a wide temperature range of heat sources with compact components (including rotating equipments such as turbine, expander, and pump) resulting in a smaller system footprint.

This paper presents an overview on the technology developed by Echogen, in partnership with Dresser-Rand, and associated leading applications. Results are reported on field testing currently underway for a 250 kW demonstration system.

Echogen Heat Engine Technology

Echogen is currently commercializing, in partnership with Dresser-Rand, a waste heat to power system through development of a proprietary thermal engine, which is entering the product introduction and customer demonstration phase of development for industrial markets.

The breakthrough thermal engine technology is based on a waste heat to power cycle using supercritical carbon dioxide (ScCO₂) as the working fluid. ScCO₂ is environmentally benign, non-toxic, with favorable heat and mass transport properties. The higher energy density of ScCO₂ reduces system component size and cost, and provides significant advantages regarding system efficiency, footprint, and ease of installation. Our patent-pending thermal engines can transform significant amounts of waste heat into electricity for applications ranging from bottom cycling in gas turbines, stationary diesel engine gensets, industrial waste heat recovery (in refineries and compression stations in particular), solar thermal, geothermal, and hybrid alternatives to the internal combustion engine.

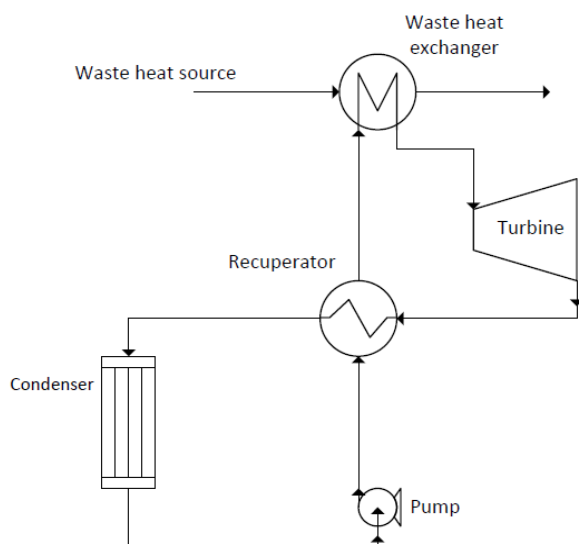


Figure 1: Simplified process flow diagram for the Echogen heat engine.

Figure 1 is a simplified process flow diagram for the Echogen heat engine and consists of five main components: waste heat and recuperator heat exchangers, condenser, system pump, and expander. Ancillary components (valves and sensors) provide system monitoring and control. Heat energy is introduced through a waste heat exchanger installed into the exhaust stack for a turbine, diesel, other reciprocating engine, boiler, or other industrial heat source. The heated ScCO₂ passes through a turbine where the waste heat is converted into mechanical shaft work to produce electricity. A recuperator recovers a portion of the residual heat while the remainder is discharged from the system through a water or air-cooled condenser. Operating

conditions maintain the CO₂ in a supercritical condition during the heat recovery and power generation portion of system cycle, and as a subcooled liquid at the pump inlet. The Echogen technology can provide integrated power, heating and cooling through a flexible system architecture which can be configured for power, co-generation or tri-generation.

Over a two-year time period, Echogen successfully advanced its technology from initial concept to product prototypes. An initial 5 kW prototype (2008), based on NASA technology, was an absorption heat pump using CO₂ and carrier fluid, and reduced to practice our approach to power generation. A subsequent 5 kW prototype (early 2009) utilized pure CO₂, proved that a supercritical cycle heat engine could be built for commercial application, and established a development pathway for first product units. A 15 kW engineering unit was designed and built

in 2009 to initially qualify the CO₂ turbine design and scale-up for future commercial-scale systems. Having achieved the milestone of delivering positive net power output during initial testing, the 15 kW system currently provides a brassboard capability as an engineering lab-based system to enable quick-turn evaluation of proposed configuration and/or controls changes for field systems development and optimization.

The Advantages of Supercritical CO₂

A key advantage of the Echogen technology is the use of supercritical CO₂ as a working fluid for heat recovery and power generation. A supercritical fluid is a substance at a temperature and pressure above its critical temperature and pressure. The critical point represents the highest temperature and pressure at which the substance can exist as a vapor and liquid in equilibrium. As shown in Figure 2, above its critical point of 87.76°F at 1,070 psi (30.98°C at 73.78 bar), carbon dioxide is a supercritical fluid and adopts properties midway between a gas and a liquid.

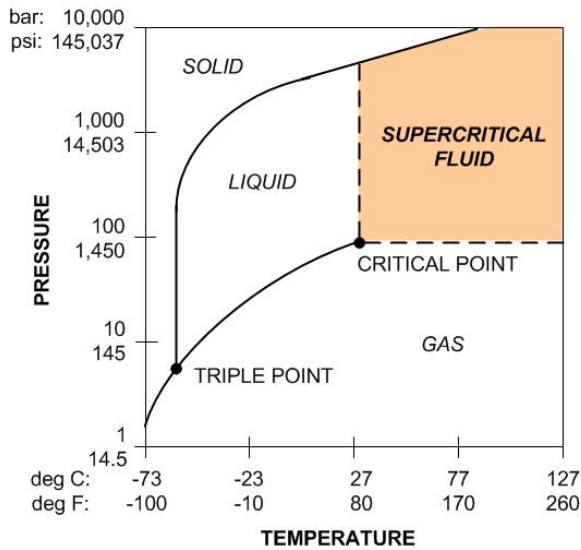


Figure 2: Carbon dioxide pressure versus temperature (PT) phase diagram.

Carbon dioxide as a working fluid for power generating cycles has many advantages. It is inexpensive, non-flammable, and abundant in nature. Due in part to its relative high working pressure, a carbon dioxide system can be built that is much more compact than systems using other working fluids.

The high density and volumetric heat capacity of CO₂ with respect to other working fluids makes it more *energy dense* meaning that the size of all system components can be considerably reduced without losing performance – including the turbine, pump, and heat exchangers (2-4). Dostal (5) compares CO₂ turbines to steam-based turbomachinery and indicates that CO₂ turbines are very compact and highly efficient with

simpler, single casing body designs while steam turbines usually require multiple turbine stages (i.e., high, medium and low-pressure) and associated casings with a corresponding increase in systems packaging complexity for additional inlet and outlet piping.

Carbon dioxide more effectively captures waste heat from sources that have an approximately constant heat capacity, such as turbine exhaust or other gases. This is due to the character of its heat capacity in the supercritical region which provides superior matching to the heat source temperature profile compared to the boiling process utilized with other working fluids such as steam or organic working fluids used in Organic Rankine Cycle (ORC) systems. The so-called *pinch point* (see Figure 3) occurs during the constant-temperature phase change of subcritical fluids, and limits the maximum fluid temperature, and thus cycle efficiency in other waste heat recovery technologies. This phenomenon is not encountered in the heat exchange process with

CO₂ due to its single-phase characteristics well above the critical point (6,7), thus permitting a higher fluid temperature to be achieved for the same heat source.

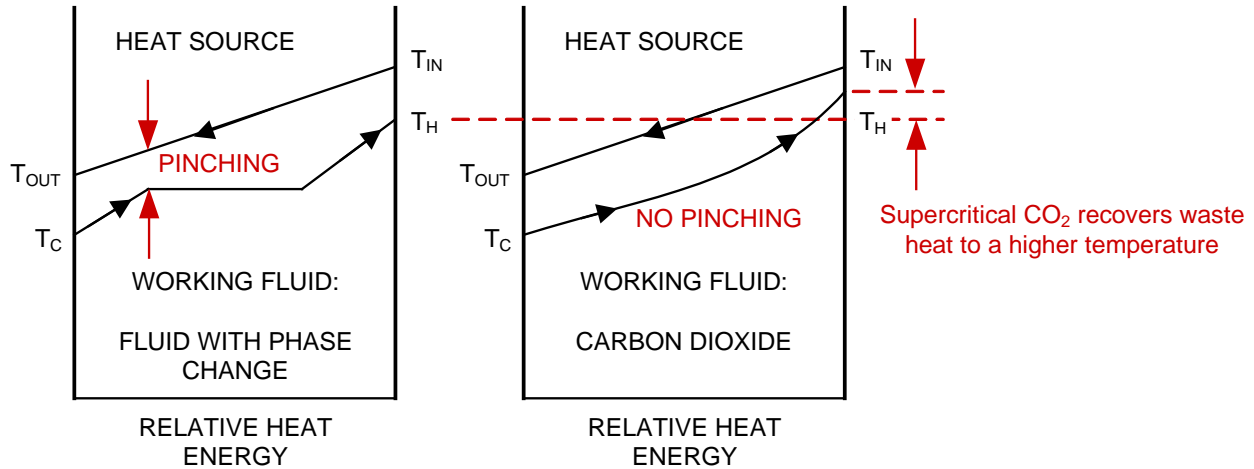


Figure 3: Comparison of waste heat exchanger operation between a thermal source and different working fluids shows the advantages of using supercritical CO₂ as a working fluid for power generation from waste heat. Source: derived from Refs. (6, 7).

Technology Comparison

A brief comparison of working fluids currently used commercially for power generation through heat recovery is shown in Table 1. Unlike steam-based systems that require condensate control and conditioned water for steam generation to prevent scaling, corrosion and fouling of system piping and components, CO₂ is a clean, non-scaling, non-fouling working fluid, and provided it is maintained in a dry condition, it is non-corrosive as well. Also, due to the boiling heat exchange process, a typical steam-based heat recovery system requires multiple stages (e.g. economizer, boiler and superheater) and multiple pressures to efficiently extract heat from the source. Effective management of stresses in the large steam drums often is a limiting factor in steam system design, particularly for cyclic operation. The single-phase heat transfer process of CO₂ permits simpler, more robust construction of the waste heat exchanger. Proper management of the startup process also gives CO₂ a much shorter potential heat-up and time to power than typical steam-based systems.

Table 1: Comparison of Power Generating Cycles for Waste Heat Recovery

Parameter	ECHOGEN ScCO ₂ Power Cycle	Organic Rankine Cycle	Steam Rankine Cycle
Source Temp Range (F)	400 to greater than 1,200	180 to 550	650+

Working Fluid	Supercritical carbon dioxide	HCFC, HFC or volatile hydrocarbons	Treated water
Working Fluid Attributes	Non-corrosive, not-toxic, non-flammable, thermally stable	Limited temperature range, flammable	Requires treatment to reduce corrosion & mineral deposition

ORC heat recovery systems use various hydro-chloro-fluoro-carbon (HCFC) refrigerants such as R245fa (1,1,1,3,3-pentafluoropropane) and hydro-fluoro-carbons (HFCs), or light hydrocarbons such as n-pentane and isobutene, or toluene. The HCFC and HFC fluids have limited temperature capability due to their thermal decomposition to highly reactive hydrochlorides and hydrofluorides. The high global warming potential of these fluids has led to regulatory pressure to phase these fluids out of production and use. Hydrocarbon working fluids present significant flammability hazards. For both classes of fluids, direct heat exchange from a high temperature source is generally avoided by use of an intermediate heat transfer fluid loop, which adds significant installation cost to ORC systems. The heat transfer fluids also have upper temperature limits in the 572 to 662 F (300 to 350 C) range, which limits the maximum working fluid temperature to lower operating temperatures. For higher temperature applications, the temperature limit of the heat transfer fluid then requires use of a diverter and bypass stack to accommodate continued operation of the main process when the heat recovery system is not operating. Due to the superior thermal stability and non-flammability of CO₂, direct heat exchange from high temperature sources is possible, permitting higher working fluid temperature (and thus higher cycle efficiency). With proper material selection and heat exchanger design, the ScCO₂ system is also capable of “dry-running,” where the main process can operate uninterrupted when the heat recovery system is not operating, thus eliminating the diverter and bypass stack.

Figure 4 compares the power output for a standalone LM2500 power generation turbine compared to the power output of the LM2500 integrated with various heat recovery technologies. The analysis was conducted using published performance data for the gas turbine, the competing waste heat recovery technologies, and an Echogen utility-scale system currently under development. Modeling results show that compared to steam-based and ORC systems, the Echogen Cycle delivers higher performance, exceeding the output of single-pressure Heat Recovery Steam Generators by a factor of 1.13 and comparable ORC systems by a factor of 1.48. The Echogen heat engine technology is a smaller and lower cost waste heat recovery solution compared to traditional power generation technologies such as steam turbines, heat recovery steam generators and ORC systems. As a platform technology, it is easily scalable from 250 kW to greater than 50 MW to support the widest possible variety of industrial and utility applications. Echogen heat engines are thermal source agnostic, meaning a wide range of heat sources are suitable for energy conversion to electricity. The thermal engines work at operating temperatures from 400 F to greater than 1,200 F (204 C to greater

than 650 C) and conditions where other devices cannot operate, enabling a greater amount of waste energy to be recovered and transformed to electricity or process heat.

Field Testing

As shown in Figure 5, Echogen completed the design and fabrication of a 250 kW demonstration system in late 2009, and the system was installed during 2010 at a test facility located in Groveport, OH, USA, for beta testing.

The 250 kW system skid measures only 10 x 12 x 20 ft (width x height x length) and weighs less than 49,000 lbs which allows for highway and truck transport without special Department of Transportation (DOT) permits. Located within the skid are all of the components previously described in Figure 1 including the main system pump, recuperator, condenser, system controller, turbo-alternator and power electronics. For convenience of testing, the flue/exhaust gas to CO₂ waste heat exchanger was replaced by a heat transfer fluid to CO₂ heat exchanger. A slave natural gas-fired system is used to heat and circulate the heat transfer fluid. Water is supplied to the condenser using a conventional cooling tower and circulation pump.

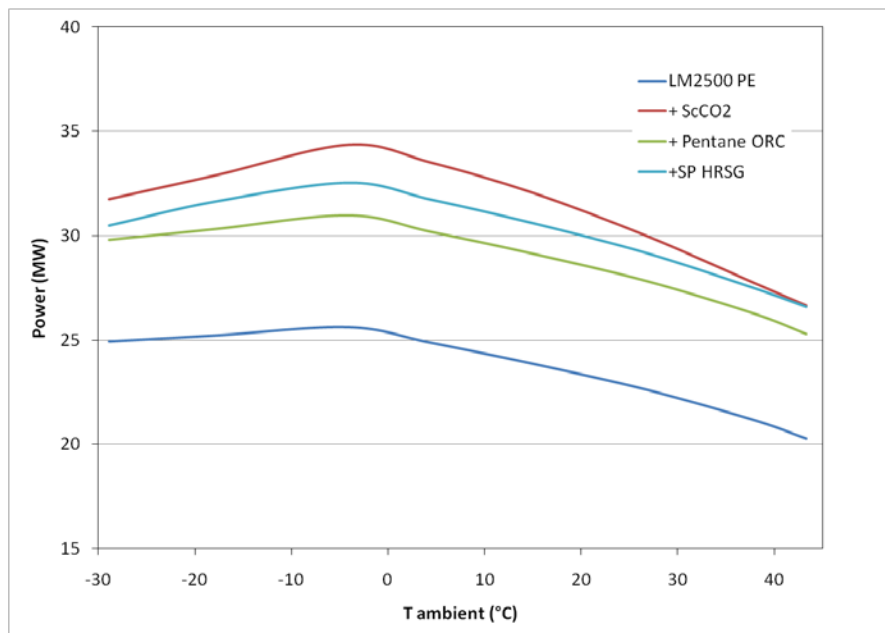


Figure 4: System performance model for an Echogen utility scale heat engine integrated to a LM2500 power generation turbine compared to competing waste heat recovery technologies.

System testing has successfully progressed through several test phases including initial checkout, shakedown and part load characterization of key system components. During testing, the 250 kW system has achieved net power output with 80 days of operation and over 85 turbine starts. In future commercial installations, the actual net system power output from the 250 kW system will range between 200 to 300 kW depending on the size and temperature of the

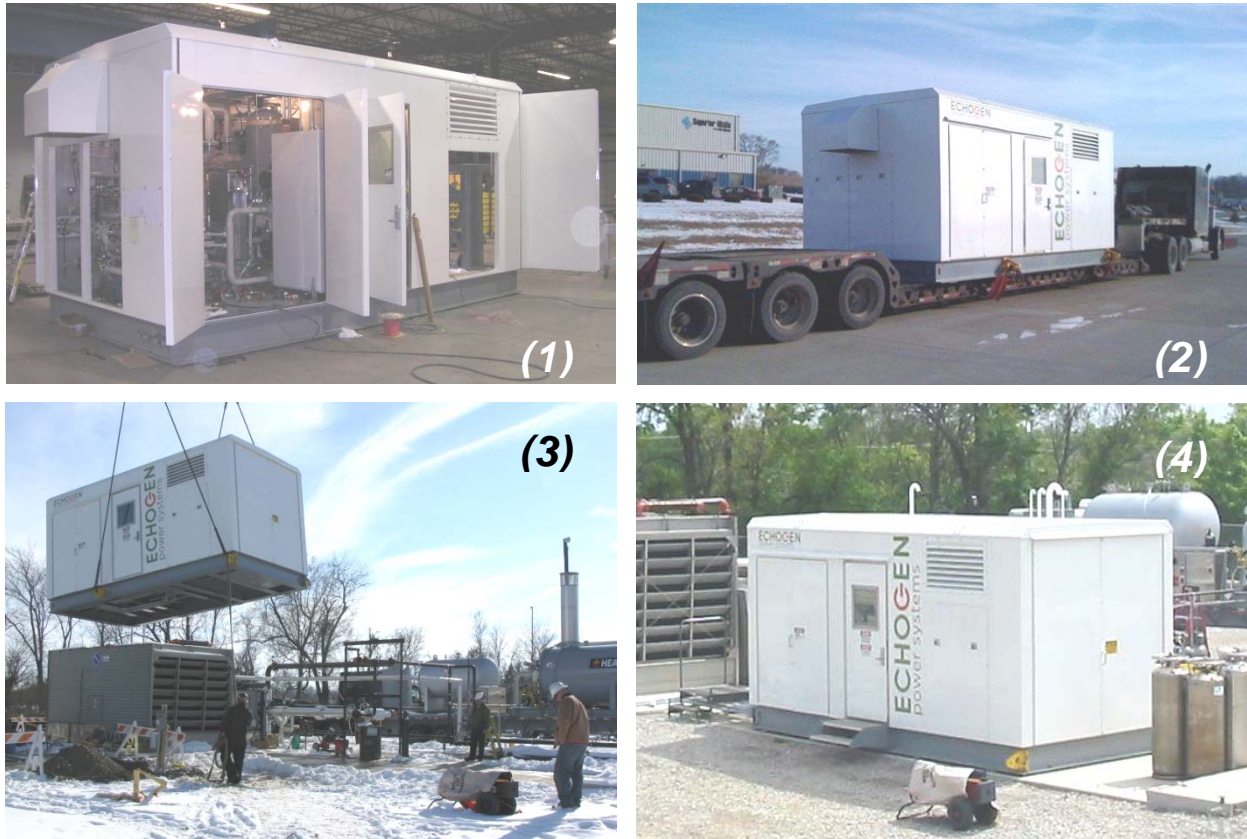


Figure 5: Field testing of the Echogen 250 kW demonstration system – (1) the system skid completed factory assembly and checkout with our systems integration partner, (2) was shipped by truck to the test site (Groveport, OH, USA), where (3) the system was installed, and (4) has achieved net power output during field testing in 2010.

heat source, and condenser water temperature. Specific tests were conducted to check out system

controls for fully automated start/stop, alarm, shutdown, process adjustment, and power grid synchronization. Performance data collected during characterization testing included temperature, pressure and mass flow rate data to calculate heat transfer effectiveness and pressure drop for all heat exchangers, system pump, turbine, and electrical generation performance, and measurement of auxiliary loads. Net power has been successfully exported to the test grid. Test results have been compared to cycle model calculations to verify actual versus predicted performance. In general, measured system and component performance has been within expectations. The results of these comparisons have provided confidence in prediction capabilities for system optimization, off design point operation, and system sizing and component scale-up for planned multi-megawatt class thermal engines for utility scale applications.

Testing for the remainder of 2011 will include further system optimization. After test completion later this year, the thermal engine is scheduled to be redeployed to a customer

facility for long term durability and reliability tests. For this testing, a finned tube waste heat exchanger, installed in the customer's exhaust duct, will be used for heat input to the cycle.

Conclusion

The Echogen ScCO₂ cycle holds great promise in providing a flexible, efficient, low cost system for waste heat recovery from a wide variety of applications. Initial testing of the 250kW system has demonstrated that the component and system performance is in line with expectations. The results of this program have been used to guide the initial design of a multi-megawatt scale system for use in large industrial and power generation applications.

Acknowledgements

The authors wish to thank Mark Terzola of Echogen for his support, review and constructive inputs during the preparation of this technical paper, as well as Dresser-Rand for their partnership in the funding and commercialization of the Echogen heat engine technology.

About the Authors

Michael Persichilli is VP Business Development and Strategic Relationships for Echogen Power Systems. Mr. Persichilli is a 30-year veteran in the power generation industry. He was formerly with various operating units of Babcock & Wilcox and Babcock Power Inc. as a senior and executive manager in a number of positions.

Timothy Held, Ph.D. is VP Engineering for Echogen Power Systems, where he is responsible for all phases of technology and product development. Prior to joining Echogen in 2008, Dr. Held was at GE Aviation for 13 years as a manager and technical leader for technology and product development of gas turbine combustors for aeronautical and stationary power generation applications.

Stephen Hostler, Ph.D. is a Lead Engineer for Echogen Power Systems. He has been involved with all aspects in the development of the Echogen power generation technology since 2007. Dr. Hostler is the Program Manager leading field testing of the 250 kW system.

Edward Zdankiewicz is a Lead Engineer for Echogen Power Systems. He has been involved with all aspects in the development of the Echogen power generation technology since 2007. Mr. Zdankiewicz has over 30 years experience in product and business development for process systems equipment and controls for international markets involved in regenerative power generation, water reclamation, environmental monitoring and control.

References

- (1) Annual Energy Outlook 2010, U.S. Energy Information Administration Office of Integrated Analysis and Forecasting, U.S. Department of Energy; April 2010.
- (2) Petter Nekså et.al, SINTEF Energy Research Refrigeration and Air Conditioning, Trondheim, Norway, "CO₂ Refrigeration, Air Conditioning and Heat Pump Technology".
- (3) Yoshioka, A. et.al, "Development of Automobile Air Conditioning System Using CO₂ Refrigerant," Mitsubishi Heavy Industries Technical Review, v. 37, no. 3, pp. 78 – 82.
- (4) Bullock, C. E., "Theoretical Performance of Carbon Dioxide in Subcritical and ASHRAE/NIST Refrigerants," Refrigerants for the 21st Century Conference, Gaithersburg, MD, pp. 20 – 26.
- (5) Dostal, V., et. al., "A Supercritical Carbon Dioxide Cycle for Next Generation Nuclear Reactors," Report No. MIT-ANP-TR-100, MIT Center for Advanced Nuclear Energy Systems; 10 Mar 2004; pp. 216-223.
- (6) Chen, Y. et.al, "Theoretical Research of Carbon Dioxide Power Cycle Application in Automobile Industry to Reduce Vehicle's Fuel Consumption," *Applied Thermal Engineering*, 25 (2005) 2041–2053.
- (7) Chen, Y., et.al, "Carbon Dioxide Cooling and Power Combined Cycle for Mobile Applications," Div. of Applied Thermodynamics and Refrigeration, Dept. of Energy Technology, Royal Institute of Technology, Brinellvagaegen 60, Stockholm, Sweden.